



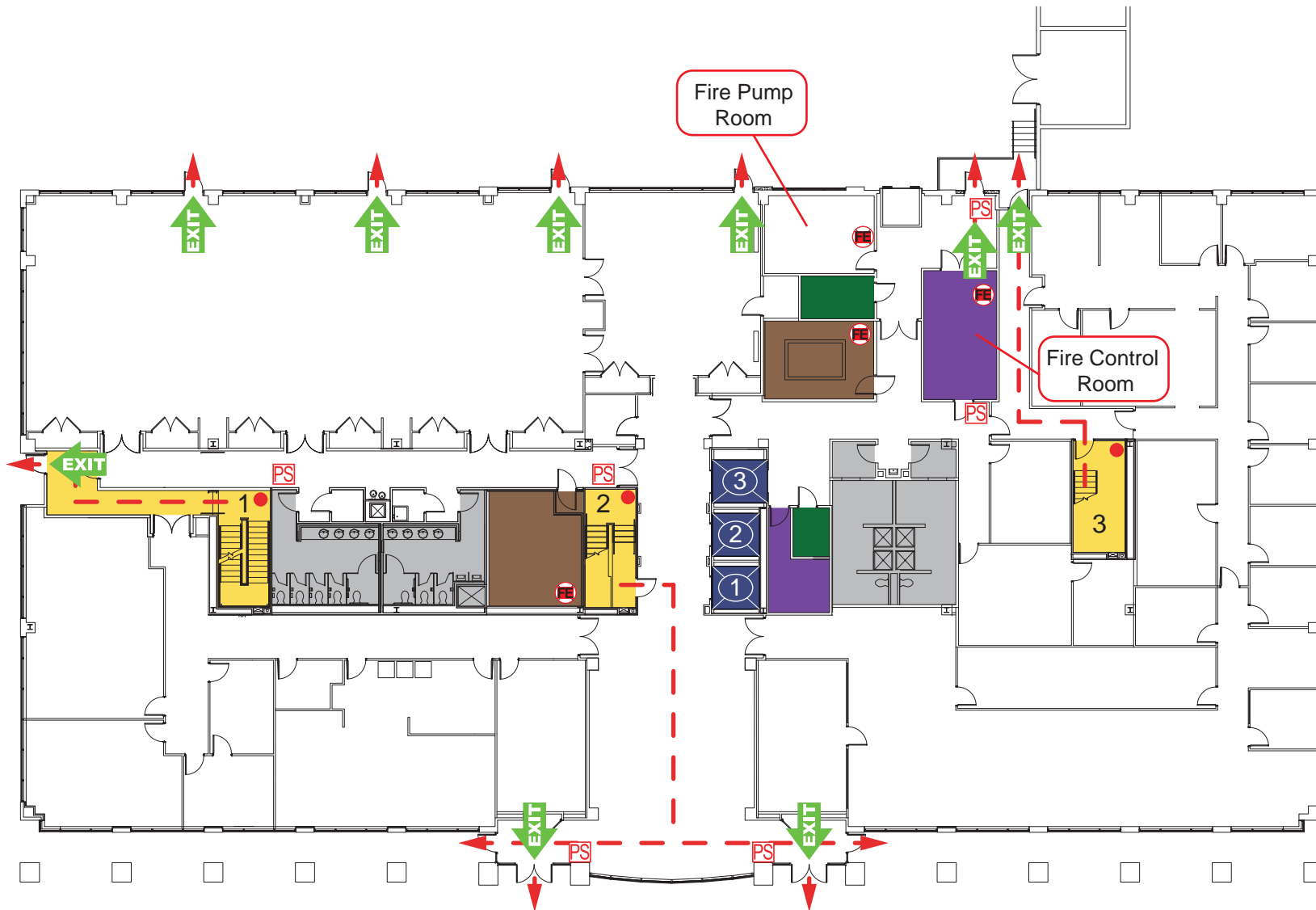


-  Fire Department Apparatus Access
-  Building Occupant Assembly Area
-  Fire Hydrant
-  Fire Department Connection

540 Gaither building footprint marked in yellow.
 Nearby buildings are shown in dark grey.

Assembly areas:

- #1: Parking lot northeast of the building: Southwest corner of Redland Blvd. and Gaither Road.
- #2: Parking lot south of 520 building.

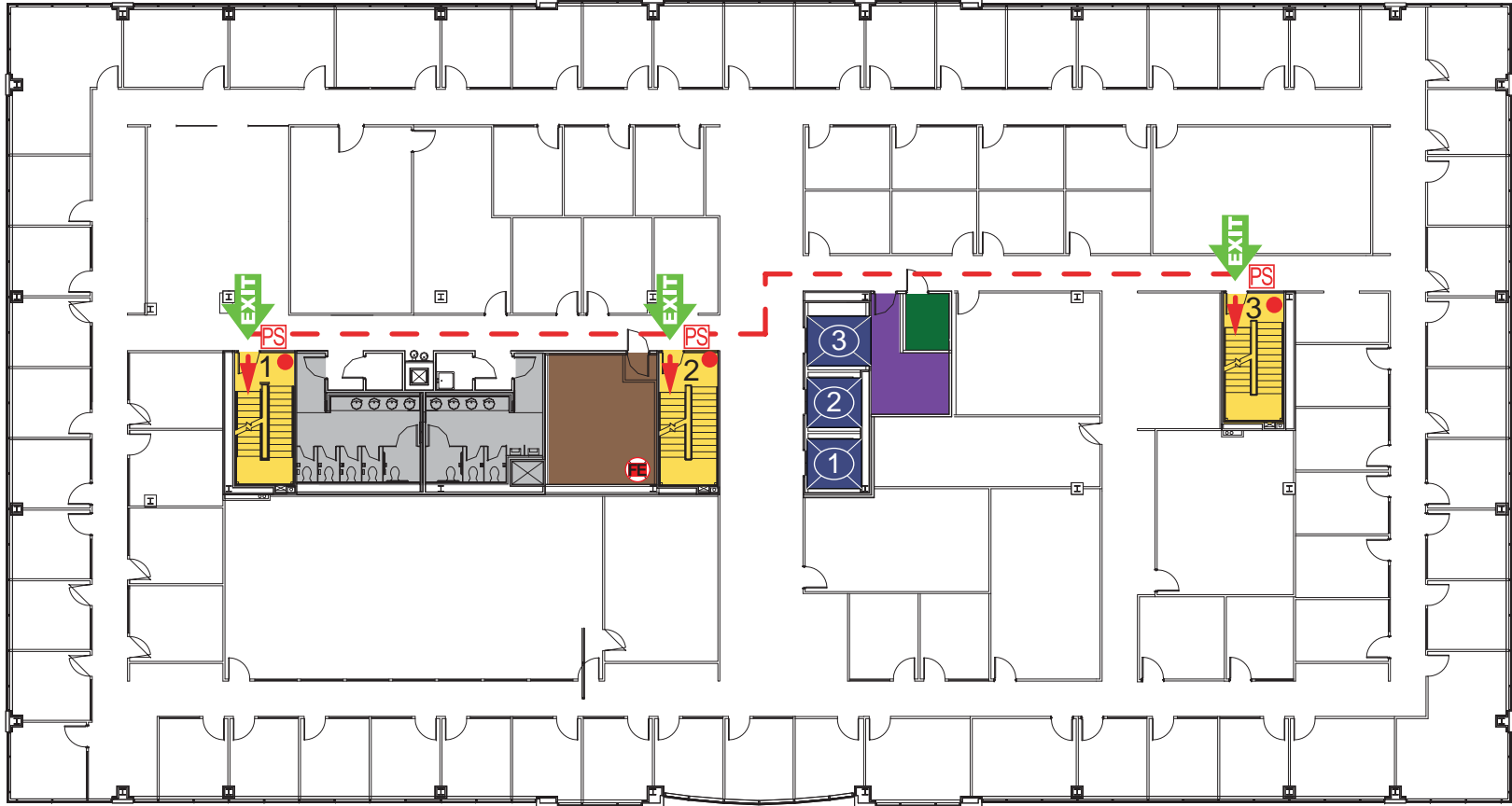


	Exit Stairwell w/ Designation		Standpipe Outlet		Mechanical Room
	Elevator Car w/ Designation		Pull Station		Telephone Closet
	Exit		Fire Extinguisher		Electrical Closet
	Exit Route		Restroom		

540 Gaither Road
Rockville, MD 20850



Floor 1



	Exit Stairwell w/ Designation		Standpipe Outlet		Mechanical Room
	Elevator Car w/ Designation		Pull Station		Telephone Closet
	Exit		Fire Extinguisher		Electrical Closet
			Exit Route		Restroom

540 Gaither Road
Rockville, MD 20850



Floor 2
Typical of floors 2 to 6