





-  Fire Department Apparatus Access
-  Building Occupant Assembly Area
-  Fire Hydrant
-  Fire Department Connection

530 Gaither building footprint marked in yellow. Nearby buildings are shown in dark grey.

Assembly areas:

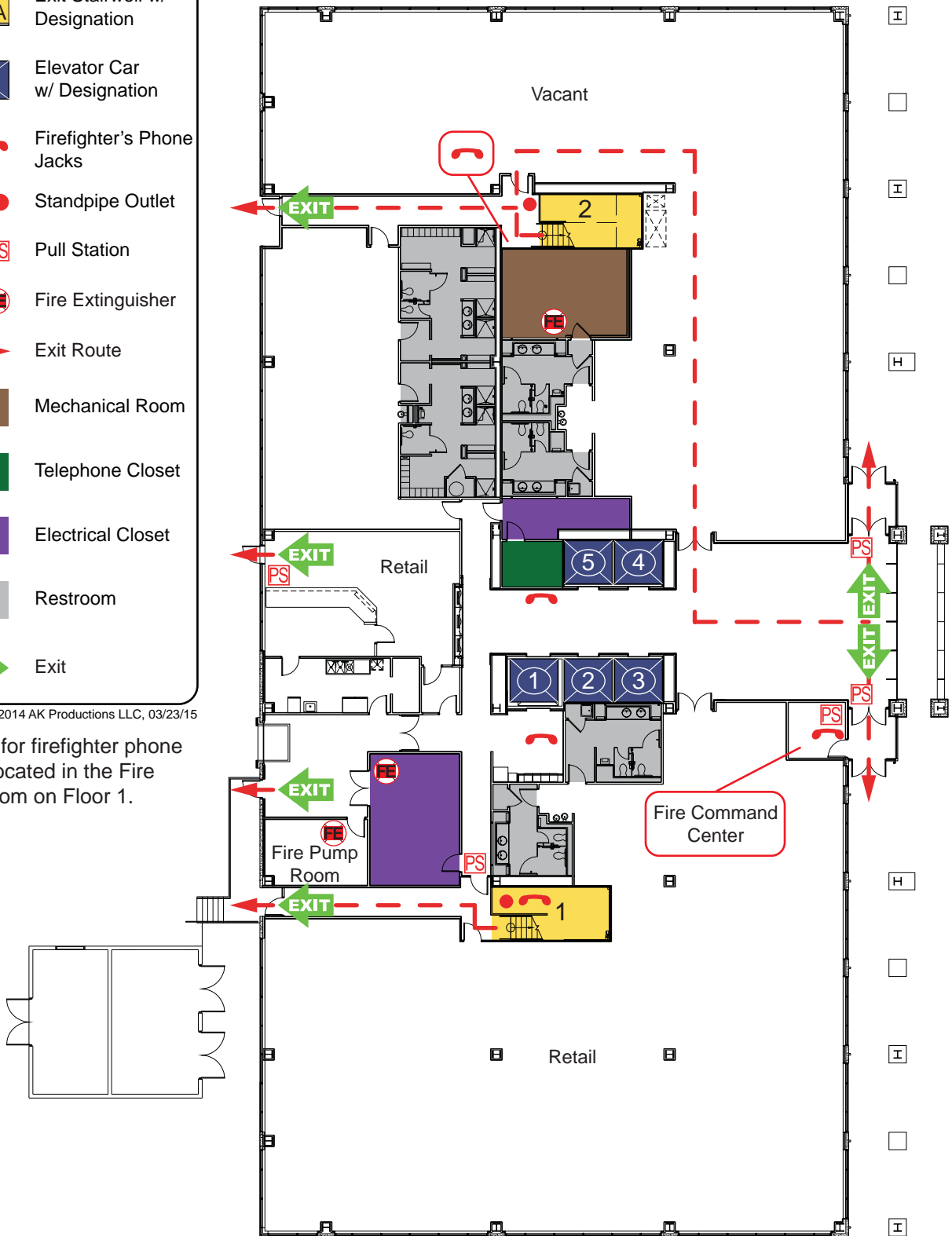
- #1: Parking lot northeast of the building: Southwest corner of Redland Blvd. and Gaither Road.
- #2: Parking lot south of 520 building.

530 Gaither Road  
Rockville, MD 20850

	Exit Stairwell w/ Designation
	Elevator Car w/ Designation
	Firefighter's Phone Jacks
	Standpipe Outlet
	Pull Station
	Fire Extinguisher
	Exit Route
	Mechanical Room
	Telephone Closet
	Electrical Closet
	Restroom
	Exit

© 2014 AK Productions LLC, 03/23/15

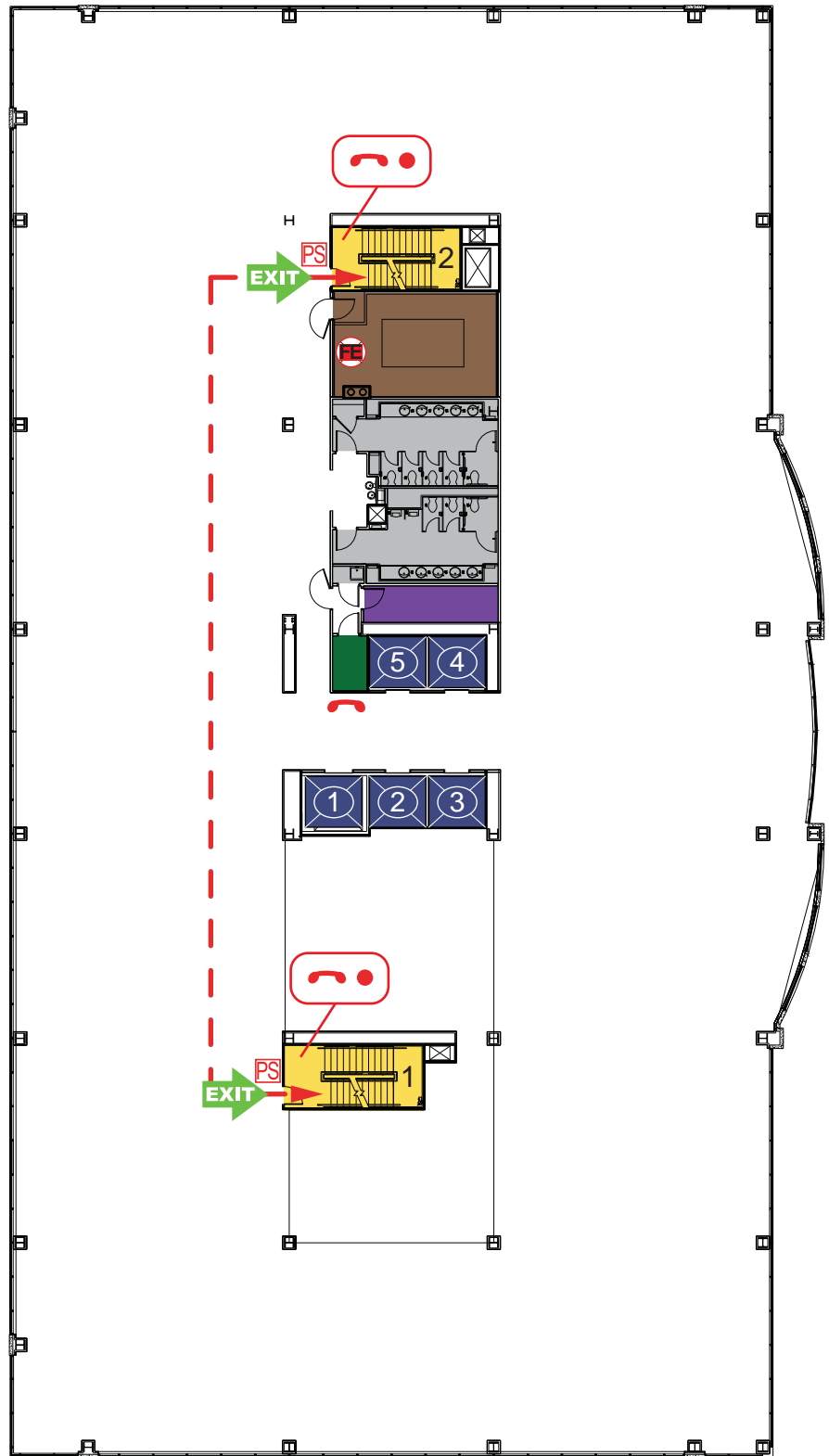
\*Handsets for firefighter phone jacks are located in the Fire Control Room on Floor 1.



	Exit Stairwell w/ Designation
	Elevator Car w/ Designation
	Firefighter's Phone Jacks
	Standpipe Outlet
	Pull Station
	Fire Extinguisher
	Exit Route
	Mechanical Room
	Telephone Closet
	Electrical Closet
	Restroom
	Exit

© 2014 AK Productions LLC, 03/23/15

\*Handsets for firefighter phone jacks are located in the Fire Control Room on Floor 1.



	Exit Stairwell w/ Designation
	Elevator Car w/ Designation
	Firefighter's Phone Jacks
	Standpipe Outlet
	Pull Station
	Fire Extinguisher
	Exit Route
	Mechanical Room
	Telephone Closet
	Electrical Closet
	Restroom
	Exit

© 2014 AK Productions LLC, 03/23/15

\*Handsets for firefighter phone jacks are located in the Fire Control Room on Floor 1.

